



## Trade Series Ultrablade Pro LED Exit

### Installation & Maintenance Instruction Leaflet



Designed in Australia to comply with the requirements of  
AS2293.3: 2005 and AS/NZS CISPR15: 2017

#### Victoria (Head Office & Manufacturing)

Website: [www.clevertronics.com.au](http://www.clevertronics.com.au)

Email: [info@clevertronics.com.au](mailto:info@clevertronics.com.au)

Phone: +61 3 9559 2700

Fax: +61 3 9559 2799

#### New South Wales

Phone: +61 2 8805 6400

Fax: +61 2 8805 6444

#### Queensland

Phone: +61 7 3442 9700

Fax: +61 7 3442 9777

#### South Australia/Northern Territory

Phone: +61 8 8301 8800

Fax: +61 8 8351 8286

#### Western Australia

Phone: +61 8 9207 0000

Fax: +61 8 9207 0088

#### New Zealand

Phone: +64 800 548 448

#### Models:

EUBPRO-LI

#### Spare Parts:

1560200

8002179

2740054

AUM03570010001

Battery, 3.2 Volt 1.1Ah Li-ion

PCA:EUBPRO LED Strip Assy (CT10602-x)

Ultrablade to Ultrablade Pro adapter

EUBPRO-CKIT-LI Ultrablade Pro,Control Only, Eco Li, M/NM

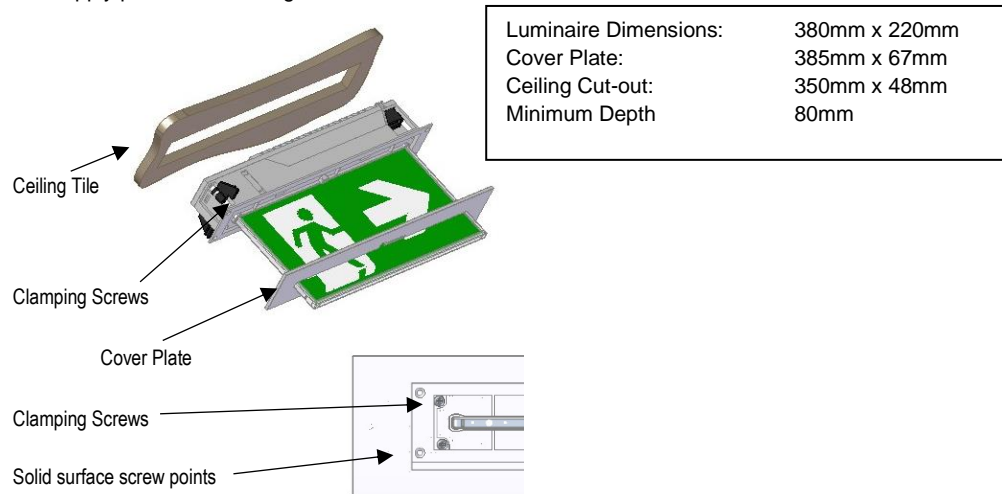
#### Important:

It is illegal for anyone, except for a licensed electrician to install or maintain this product. Before installation, ensure that the electricity supply has been switched off and isolated. Installation must be carried out in accordance with the relevant Australian and International Standards.

## Installation:

The Trade Series Ultrablade Pro LED Exit (EUBPRO-LI) is a recessed ceiling mount fitting. The EUBPRO-LI can be attached directly to any solid surface, or to a ceiling tile with the integrated clamping mechanisms. The EUBPRO-LI comes with an attached Flex and Plug. Please follow the steps below to install the EUBPRO-LI Exit:

- **If replacing an Ultrablade, an Ultrablade to Ultrablade Pro adapter 2740054 (sold separately) is required)**
- Create a cut-out (350mm x 48mm) in the mounting surface.
- Route the power cord to the mains connection and connect the 240VAC supply.
- Insert the EUBPRO-LI into the ceiling cavity tighten the (4) clamping screws.
- Alternately, fix the EUBPRO-LI to a solid surface using (4) screws through the surface material.
- Install the cover plate.
- Apply power to the fitting and test.



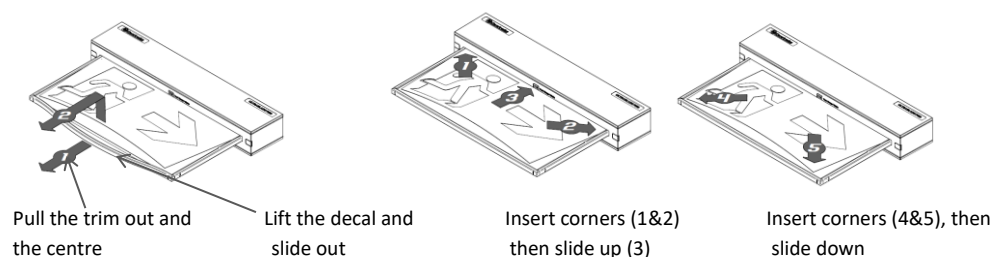
## Maintained/Non-Maintained Operating Mode:

Press the Test Button 5 times within a 4 second period to toggle operation of the fitting between Maintained and Non-Maintained mode

## Changing EXIT Legend Inserts:

The Ultrablade Pro Exit comes with an assortment of standard legends.

1. To remove the legend, grasp the centre of the bottom trim piece and pull down slightly to expose the legend edge. See photo.
2. Grasp the bottom edge of the legend and slide the existing legend out of the blade, while working the edges out along the sides.
3. Slide the new legend into the blade, ensuring to fit the edges into the sides then slide the legend to the top of the blade. Insert one bottom corner then the other. Slide the legend down into the bottom trim.



## Testing:

Once connected to the 240V mains supply, the unit must be allowed to charge the battery for at least 24 hours. Conduct the following tests:

- For the first test, the emergency lamp must remain illuminated for at least 2 hours after disconnection from the mains supply.
- Subsequent tests require the unit to illuminate for at least 90 minutes. The results of all tests are required to be recorded in a service logbook, which is to be kept on-site at all times. If the unit fails to remain illuminated for the requisite time, remedial action must be taken to repair the situation and once completed, the unit must pass a subsequent test. For more specific information, please refer to the current edition of the AS 2293.3 Standard.

## Ultrablade Maintenance:

### LED Lamp Replacement:

- Use only the LED Strip recommended in the Spares Parts list of this instruction.
- Disconnect battery from LED driver.
- Remove the screw holding the driver PCA. Remove the PCA.
- Remove the 4 screws holding the battery bracket. Remove the bracket with the battery.
- Disconnect the signal cable from LED strip.
- Remove 4 self-tapping screws and unclip the LED strip.
- Install the new LED strip following the above procedure in reverse.

### Battery Replacement:

- Use only the battery recommended in the Spares List on this instruction.
- Remove the battery from battery compartment, un-plug the lead from the battery connector remove the old battery.
- Plug the new battery into the battery connector.
- Secure the battery into the battery compartment

## Trouble Shooting:

Below are a list of common problems and their possible causes.

**Fault:** The Green LED Test Switch indicator is not illuminated.

**Check:** A.C. is connected and is turned on. Battery is connected Test Switch for damage.

**Fault:** Lamp does not illuminate in emergency mode.

**Check:** A.C. is connected. Lamp is correctly inserted. Battery is connected

**Fault:** Lamp illuminates in emergency mode, but only stays on for a short period.

**Check:** Battery has been allowed to charge for at least 24 hours. Battery for damage.

**Fault:** Green LED flashes once every 5 seconds-Battery is disconnected

**Check:** Battery is connected.

**Fault:** Green LED blinks off once every 5 seconds- Charging very flat battery Allow 20min to recover battery then recheck

**Fault:** Green LED flashes at 2Hz (Fast flash)- Faulty battery Replace battery

## Rated Emergency Lumen Output in accordance with AS2293.1, not applicable for -TH (theatre) version (refer to spacing tables for installation positions):

Refer to the Technical Label for classification information.

## Caution:

On many building sites, power circuits may be cut off in an uncontrolled and repetitive basis during construction. As a result, any Exit & Emergency Units, on these circuits, will have their batteries discharged or "cycled". The battery in this fitting has been selected to give excellent long-life performance in a controlled AS2293 testing environment. Excessive battery cycling will reduce through-life performance and may lead to premature battery failure. Battery warranty claims, as a result of such abuse, are specifically EXCLUDED from Clevertronics warranty terms.

## Warranty:

For Product Warranty information and Terms and Conditions of Sales please refer to our website <http://clevertronics.com.au/terms-conditions-sale-australia-nz/>