



LWFLED

L10 Lithium Nanophosphate LED Weatherproof Supalite flood unit, surface mounted Emergency Light, Enabled with Clevertest Plus



PRODUCT INFORMATION	
Part Number	LWFLED
MIC	AUE01320010001
Description	L10 Lithium Nanophosphate LED Weatherproof Supalite flood unit, surface mounted Emergency Light, Enabled with Clevertest Plus
Construction	Polycarbonate
Mounting	Surface wall mount (hard wired supply connection)
Dimensions L x W x H	Main enclosure - 380mm x 190mm x 130mm Total height including LED Heads 310mm
Weight	3.6kg
Operating Mode	Non-maintained
Testing System	Clevertest Plus Enabled (Not activated by default)
Battery	2 x Lithium Nanophosphate, 6.6V 2500mAh
Charging Method	Intelligent current limited constant voltage
Lamp(s)	2 x LED Heads (adjustable), 495lm per lamp head
Operating Voltage	240V AC; 50Hz
Power Factor	TBC
Supply Current	TBC
Power Consumption	1.0 Watts (Standby), 5.4 Watts (Max)
Inrush Current (Peak/Duration)	TBC
Earth Leakage	TBC
IP Rating	IP65
Impact Rating	N/A
Operating Temperature	0°C to 40°C
AS2293 Classification	C ₀ =N/A C ₉₀ =N/A
Applicable Standards	

REPLACEMENT PARTS	
PART NUMBER	DESCRIPTION
1530260	Battery
1100550	LED Panel (QTY 2)
AUM01370150001	Emergency Driver

The product details described in this document are current as at the version date of the document. We reserve the right to change product design, specifications or materials (Specifications) as part of our continuous improvement program. Please confirm the applicable Specifications at the time of placing your order

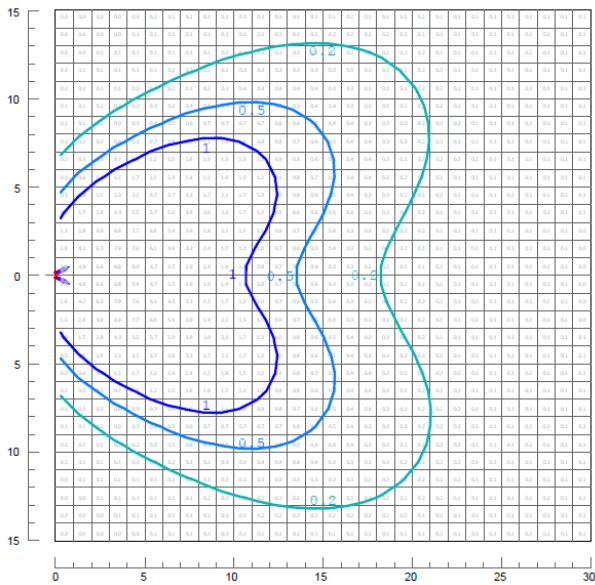


LWFLED

L10 Lithium Nanophosphate LED Weatherproof Supalite flood unit, surface mounted Emergency Light, Enabled with Clevertest Plus

Isolux plot and value table for a 30m x 30m area serviced by a Weatherproof Supalite with each LED lamp head tilted down 30°, rolled out 30°. The Weatherproof Supalite mounted on the wall at a height of 3m and 6m (values in lux).

Mounting Height 3m



Mounting Height 6m

