

ARGO WEATHERPROOF



Switchable Colour and Dual Output Weatherproof Batten Range

The ARGO Weatherproof is the perfect all-rounder when it comes to projects requiring a reliable, weatherproof batten. With IP65 and IK08 impact ratings combined with switchable colour and output, the ARGO provides greater flexibility on each project.

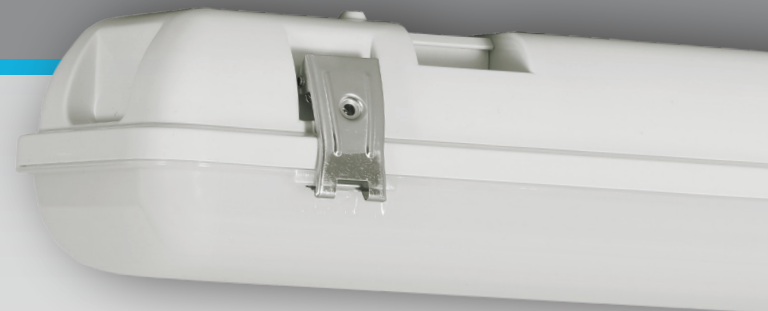
The emergency version contains market-leading Lithium Iron Phosphate battery technology and testing options are available with the LP range. Packed with features at the right price and backed by Clevertronics reliability. You won't be let down by the ARGO.

Applications

- | | |
|--|---|
|  Car Parks |  Corridors |
|  Stairwells |  Back of House |
|  Fire Stairs | |

TRADE
SERIES
THE TRADES CHOICE

LP LITHIUM IRON
PHOSPHATE
PREMIUM
PREMIUM PROJECT PERFORMANCE



Features and Benefits

- AS/NZS 2293.3 compliant
- IP65
- Long life, energy efficient LED strip module
- Switchable colour (3000K / 4000K / 5700K)
- Switchable output (varies by model)
- Lithium (LiFePO₄) battery technology
- Quick connect surface mount brackets and on-carton mounting template
- Large terminal block for easy installation
- IPART/VEU approval



ARGO WEATHERPROOF 600MM
SWITCHABLE COLOUR

ARGO WEATHERPROOF 600MM
SWITCHABLE COLOUR

TEST OPTIONS / PART #	ORDERING INFORMATION		
	EMERGENCY (TS)		EMERGENCY (LP)
	STANDARD		
	Nominal Size	600mm	600mm
	Standard	ARGO-600-EM	ARGO-600-LP
	DALI Driver	No	
	Motion Sensors	ARGO-600-SEN-EM	ARGO-600-SEN-LP
	CTP System Compatible	No	Yes
	DALI*	-	ARGO-600-LP-DALI
	Zoneworks XT HIVE*	-	ARGO-600-LP-HV
Carton Quantity			1
Weight - Single (Carton)		1.5kg	1.25kg
Dimensions (L X W X H)		655mm x 121mm x 88mm	

* For motion sensor version add -SEN to the product code as per following example: ARGO-600-SEN-LP-DALI

TECHNICAL SPECIFICATIONS		
EMERGENCY (TS)		EMERGENCY (LP)
STANDARD		
Construction - Base		UV Stabilised Polycarbonate
Construction - Diffuser		UV Stabilised Polycarbonate
Voltage (V) (Frequency (Hz))		220-240V(50Hz)
Power Consumption (Standby / Max) ♦		(See Table on Next Page)
Lamp ♦		Dual LED Strip Module
Lamp(s) (CCT / Life)		3000K, 4000K, 5700K / 50,000hrs (L70 / B50, Ra>80 Ta40c)
Nominal Total Light Output ♦		(See Table on Next Page)
Ingress Protection Rating (IP)		IP65
Impact Rating (IK)		IK08

♦ Please refer to the specific product data sheet for actual power, light output, lamp lifetime and driver values.

EMERGENCY SPECIFICATIONS	
EMERGENCY (TS)	
EMERGENCY (LP)	
Operating Mode	Sustained
Battery Configuration	Integral
Battery Type	Lithium Iron Phosphate
Voltage / mAh	3.2V / 3000mAh
Charging Method	Intelligent Current Limited Constant Voltage

CLASSIFICATIONS	
EMERGENCY (TS)	
EMERGENCY (LP)	
C0	D40
C90	D25

SPACING TABLE & MOUNTING HEIGHTS - AS / NZS 2293.1:2018 (MINIMUM LIGHT LEVEL OF 0.2 LUX)												
Classification	2.1m	2.4m	2.7m	3.0m	3.3m	3.6m	4.0m	4.5m	5.0m	6.0m	7.0m	8.0m
D25	11.5	13.2	14.8	15.7	16.1	16.4	16.8	17.3	17.6	18.1	18.3	18.2
D40	11.5	13.2	14.8	16.5	18.1	19.5	20.1	20.7	21.2	22.1	22.6	23.0

For 1 lux and AS/NZS 2293.1:2005 spacing tables please visit: <https://clevertronics.com.au/spacing-tables/>

*Warranty information located at: <https://clevertronics.com.au/warranty-statement/>

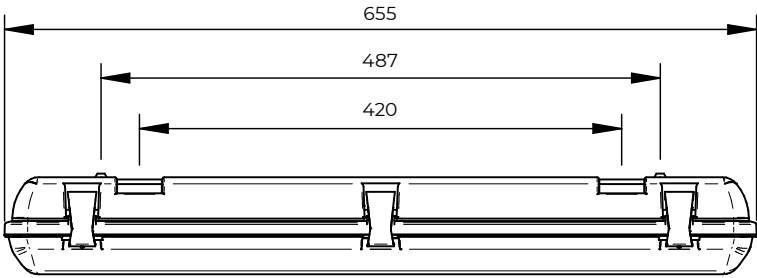
All product data is current as at the version date of the document. We reserve the right to change product design, specifications or materials (Specifications) as part of our continuous improvement program. Please confirm the applicable Specifications at the time of placing your order.

NO SENSOR

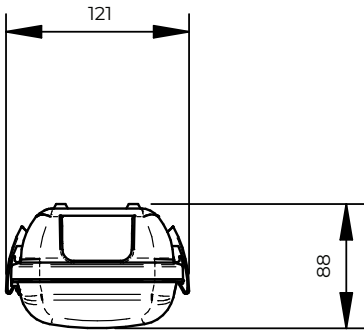
POWER CONSUMPTION	Standby Charge/ Main Lamp On		Main Lamp On	LUMEN OUTPUT			LUMENS / WATT		
	OUTPUT (700mA)	TS	LP	STANDARD	TS	LP	STANDARD	TS	LP
3000K	19.0W	19.0W	19.0W	19.0W	1950lm	1950lm	1950lm	103lm/W	103lm/W
4000K DEFAULT	18.0W	18.0W	18.0W	18.0W	2150lm	2150lm	2150lm	119lm/W	119lm/W
5700K	19.0W	19.0W	19.0W	19.0W	2040lm	2040lm	2040lm	107lm/W	107lm/W

SENSOR

POWER CONSUMPTION	"Standby Charge / Main Lamp On"		Main Lamp On	"Standby Charge / Main Lamp On @ Min. 10%"		"Main Lamp On @ Min. 10%"	LUMEN OUTPUT			LUMENS / WATT		
	OUTPUT (700mA)	TS	LP	STANDARD	TS	LP	STANDARD	TS	LP	STANDARD	TS	LP
3000K	20.0W	20.0W	19.0W	19.0W	2.0W	2.0W	2.0W	1950lm	1950lm	1950lm	97lm/W	97lm/W
4000K DEFAULT	19.0W	19.0W	19.0W	19.0W	2.0W	2.0W	2.0W	2150lm	2150lm	2150lm	113lm/W	113lm/W
5700K	20.0W	20.0W	19.0W	19.0W	2.0W	2.0W	2.0W	2040lm	2040lm	2040lm	102lm/W	102lm/W



Dimensions (mm)



All product data is current as at the version date of the document. We reserve the right to change product design, specifications or materials (Specifications) as part of our continuous improvement program. Please confirm the applicable Specifications at the time of placing your order.

ARGO WEATHERPROOF 1200MM

SWITCHABLE COLOUR & DUAL OUTPUT

ORDERING INFORMATION		EMERGENCY (TS)		EMERGENCY (LP)		STANDARD	
TEST OPTIONS / PART #	Nominal Size	1200mm		1200mm		1200mm	
	Standard	ARGO-1200-EM		ARGO-1200-LP		ARGO-1200	
	DALI Driver	ARGO-1200-DD-EM		ARGO-1200-DD-LP		ARGO-1200-DD	
	Motion Sensors	ARGO-1200-SEN-EM		ARGO-1200-SEN-LP		ARGO-1200-SEN	
	CTP System Compatible	No		Yes		–	
	DALI*	-		ARGO-1200-LP-DALI		-	
	Zoneworks XT HIVE*	-		ARGO-1200-LP-HV		-	
	Carton Quantity	1					
Weight - Single (Carton)	2.6kg		2.6kg		2.3kg		
Dimensions (L X W X H)	1265mm x 121mm x 88mm						

* For motion sensor version add -SEN to the product code as per following example: ARGO-1200-SEN-LP-DALI

TECHNICAL SPECIFICATIONS			EMERGENCY (TS)	EMERGENCY (LP)	STANDARD
Construction - Base	UV Stabilised Polycarbonate				
Construction - Diffuser	UV Stabilised Polycarbonate				
Voltage (V) (Frequency (Hz))	220-240V(50Hz)				
Power Consumption (Standby / Max) ♦	(See Table on Next Page)				
Lamp ♦	Dual LED Strip Module				
Lamp(s) (CCT / Life)	3000K, 4000K, 5700K / 50,000hrs (L70 / B50, Ra>80 Ta40c)				
Nominal Total Light Output ♦	(See Table on Next Page)				
Ingress Protection Rating (IP)	IP65				
Impact Rating (IK)	IK08				
Energy Approvals	IPART/VEU				

♦ Please refer to the specific product data sheet for actual power, light output, lamp lifetime and driver values.

EMERGENCY SPECIFICATIONS	EMERGENCY (TS)		EMERGENCY (LP)	
	Sustained			
	Integral			
	Lithium Iron Phosphate			
	3.2V / 3000mAh		3.2V / 6400mAh	
	Intelligent Current Limited Constant Voltage			

CLASSIFICATIONS			EMERGENCY (TS)	EMERGENCY (LP)
C0	D50		D63	
C90	D32		D40	

SPACING TABLE & MOUNTING HEIGHTS - AS / NZS 2293.1:2018 (MINIMUM LIGHT LEVEL OF 0.2 LUX)												
Classification	2.1m	2.4m	2.7m	3.0m	3.3m	3.6m	4.0m	4.5m	5.0m	6.0m	7.0m	8.0m
D32	11.5	13.2	14.8	16.5	17.6	18.0	18.5	19.0	19.5	20.1	20.5	20.7
D40	11.5	13.2	14.8	16.5	18.1	19.5	20.1	20.7	21.2	22.1	22.6	23.0
D50	11.5	13.2	14.8	16.5	18.1	19.8	21.8	22.5	23.1	24.1	24.9	25.4
D63	11.5	13.2	14.8	16.5	18.1	19.8	22.0	24.5	25.2	26.4	27.3	28.0

ⁿ Care should be taken when spacing luminaires at the distances indicated by the shaded regions to ensure conformance to AS/NZS2293.1, Clause 4.3 is maintained. A single emergency luminaire shall not serve an area of greater than 500 m².

For 1 lux and AS/NZS 2293.1:2005 spacing tables please visit: <https://clevertronics.com.au/spacing-tables/>

*Warranty information located at: <https://clevertronics.com.au/warranty-statement/>

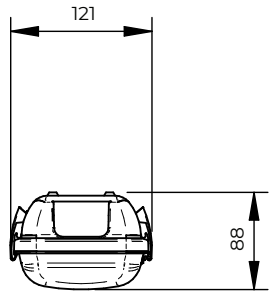
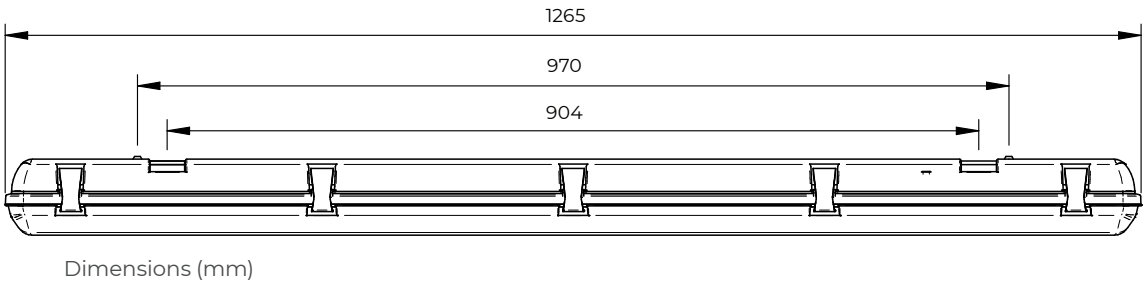
All product data is current as at the version date of the document. We reserve the right to change product design, specifications or materials (Specifications) as part of our continuous improvement program. Please confirm the applicable Specifications at the time of placing your order.

ARGO WEATHERPROOF 1200MM

SWITCHABLE COLOUR & DUAL OUTPUT

NO SENSOR											
POWER CONSUMPTION		Standby Charge/ Main Lamp On		Main Lamp On		LUMEN OUTPUT			LUMENS / WATT		
OUTPUT 2 (700mA)		TS	LP	STANDARD		TS	LP	STANDARD	TS	LP	STANDARD
3000K		39.2W	38.0W	38.6W		4190lm	3819lm	4190lm	107lm/W	100lm/W	108lm/W
4000K DEFAULT		37.4W	36.0W	36.8W		4608lm	4318lm	4608lm	123lm/W	120lm/W	125lm/W
5700K		38.9W	38.0W	38.3W		4350lm	4100lm	4350lm	112lm/W	108lm/W	113lm/W
OUTPUT 1 (350mA)											
3000K		19.1W	20.0W	18.2W		2282lm	2260lm	2282lm	119lm/W	113lm/W	125lm/W
4000K		18.6W	19.0W	18.7W		2412lm	2431lm	2412lm	130lm/W	128lm/W	129lm/W
5700K		19.0W	20.0W	18.6W		2355lm	2400lm	2355lm	124lm/W	120lm/W	126lm/W

SENSOR															
POWER CONSUMPTION		"Standby Charge / Main Lamp On"		Main Lamp On		"Standby Charge / Main Lamp On @ Min. 10%"		"Main Lamp On @ Min. 10%"		LUMEN OUTPUT			LUMENS / WATT		
OUTPUT 2 (700mA)	TS	LP	STANDARD	TS	LP	STANDARD	TS	LP	STANDARD	TS	LP	STANDARD	TS	LP	STANDARD
3000K	38.3W	39.0W	38.0W	3.1W	3.0W	2.7W	4137lm	3819lm	4137lm	108lm/W	98lm/W	109lm/W			
4000K DEFAULT	36.4W	37.0W	36.1W	3.1W	3.0W	2.7W	4529lm	4318lm	4529lm	124lm/W	116lm/W	125lm/W			
5700K	37.9W	39.0W	37.6W	3.1W	3.0W	2.7W	4282lm	4100lm	4282lm	114lm/W	105lm/W	114lm/W			



All product data is current as at the version date of the document. We reserve the right to change product design, specifications or materials (Specifications) as part of our continuous improvement program. Please confirm the applicable Specifications at the time of placing your order.

ARGO WEATHERPROOF 1500MM

SWITCHABLE COLOUR & DUAL OUTPUT

ORDERING INFORMATION		EMERGENCY (TS)	EMERGENCY (LP)	STANDARD
TEST OPTIONS / PART #	Nominal Size	1500mm	1500mm	1500mm
	Standard	ARGO-1500-EM	ARGO-1500-LP	ARGO-1500
	DALI Driver	No		
	Motion Sensors	ARGO-1500-SEN-EM	ARGO-1500-SEN-LP	ARGO-1500-SEN
	CTP System Compatible	No	Yes	–
	DALI*	-	ARGO-1500-LP-DALI	-
	Zoneworks XT HIVE*	-	ARGO-1500-LP-HV	-
	Carton Quantity	1		
Weight - Single (Carton)	3.1kg	3.1kg	2.8kg	
Dimensions (L X W X H)	1565mm x 121mm x 88mm			

* For motion sensor version add -SEN to the product code as per following example: ARGO-1500-SEN-LP-DALI

TECHNICAL SPECIFICATIONS			EMERGENCY (TS)	EMERGENCY (LP)	STANDARD
Construction - Base			UV Stabilised Polycarbonate		
Construction - Diffuser			UV Stabilised Polycarbonate		
Voltage (V) (Frequency (Hz))			220-240V(50Hz)		
Power Consumption (Standby / Max) ♦			(See Table on Next Page)		
Lamp ♦			Dual LED Strip Module		
Lamp(s) (CCT / Life)			3000K, 4000K, 5700K / 50,000hrs (L70 / B50, Ra>80 Ta40c)		
Nominal Total Light Output ♦			(See Table on Next Page)		
Ingress Protection Rating (IP)			IP65		
Impact Rating (IK)			IK08		
Energy Approvals			-		

♦ Please refer to the specific product data sheet for actual power, light output, lamp lifetime and driver values.

EMERGENCY SPECIFICATIONS			EMERGENCY (TS)	EMERGENCY (LP)
Operating Mode			Sustained	
Battery Configuration			Integral	
Battery Type			Lithium Iron Phosphate	
Voltage / mAh			3.2V / 3000mAh	3.2V / 6400mAh
Charging Method			Intelligent Current Limited Constant Voltage	

CLASSIFICATIONS			EMERGENCY (TS)	EMERGENCY (LP)
C0			D50	D63
C90			D32	D40

SPACING TABLE & MOUNTING HEIGHTS - AS / NZS 2293.1:2018 (MINIMUM LIGHT LEVEL OF 0.2 LUX)												
Classification	2.1m	2.4m	2.7m	3.0m	3.3m	3.6m	4.0m	4.5m	5.0m	6.0m	7.0m	8.0m
D32	11.5	13.2	14.8	16.5	17.6	18.0	18.5	19.0	19.5	20.1	20.5	20.7
D40	11.5	13.2	14.8	16.5	18.1	19.5	20.1	20.7	21.2	22.1	22.6	23.0
D50	11.5	13.2	14.8	16.5	18.1	19.8	21.8	22.5	23.1	24.1	24.9	25.4
D63	11.5	13.2	14.8	16.5	18.1	19.8	22.0	24.5	25.2	26.4	27.3	28.0

in Care should be taken when spacing luminaires at the distances indicated by the shaded regions to ensure conformance to AS/NZS2293.1, Clause 4.3 is maintained. A single emergency luminaire shall not serve an area of greater than 500 m².

For 1 lux and AS/NZS 2293.1:2005 spacing tables please visit: <https://clevertronics.com.au/spacing-tables/>

*Warranty information located at: <https://clevertronics.com.au/warranty-statement/>

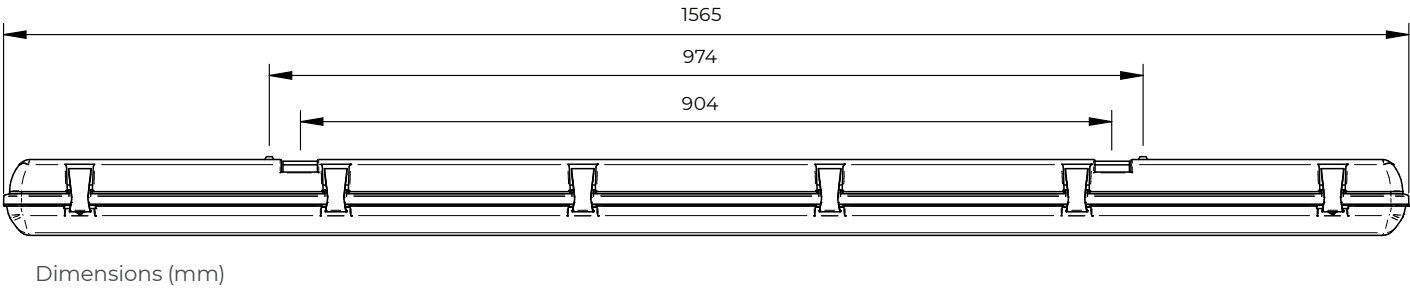
All product data is current as at the version date of the document. We reserve the right to change product design, specifications or materials (Specifications) as part of our continuous improvement program. Please confirm the applicable Specifications at the time of placing your order.

ARGO WEATHERPROOF 1500MM

SWITCHABLE COLOUR & DUAL OUTPUT

NO SENSOR													
POWER CONSUMPTION		Standby Charge/ Main Lamp On		Main Lamp On		LUMEN OUTPUT			LUMENS / WATT				
OUTPUT (1200mA)		TS	LP	STANDARD		TS	LP	STANDARD	TS	LP	STANDARD		
3000K		56.5W		56.1W		5904lm		5904lm		104lm/W		105lm/W	
4000K DEFAULT		53.6W		52.7W		6244lm		6244lm		116lm/W		118lm/W	
5700K		56.5W		56.5W		5631lm		5631lm		100lm/W		100lm/W	

SENSOR													
POWER CONSUMPTION	"Standby Charge / Main Lamp On"		Main Lamp On	"Standby Charge / Main Lamp On @ Min.10%"		"Main Lamp On @ Min.10%"	LUMEN OUTPUT			LUMENS / WATT			
	OUTPUT (1200mA)	TS	LP	STANDARD	TS	LP	STANDARD	TS	LP	STANDARD	TS	LP	STANDARD
3000K													
4000K DEFAULT													
5700K													



Dimensions (mm)

All product data is current as at the version date of the document. We reserve the right to change product design, specifications or materials (Specifications) as part of our continuous improvement program. Please confirm the applicable Specifications at the time of placing your order.

Victoria

1 Caribbean Drive
Scoresby VIC 3179
Phone: +61 3 9559 2700
Fax: +61 3 9559 2799
Email: statemgrvic@clevertronics.com.au

New South Wales

9 Distribution Place
Seven Hills NSW 2147
Phone: +61 2 8805 6400
Fax: +61 2 8805 6444
Email: statemgrnsw@clevertronics.com.au

Queensland

2/8-12 Monte-Khoury Drive
Loganholme QLD 4129
Phone: +61 7 3442 9700
Fax: +61 7 3442 9777
Email: statemgrqld@clevertronics.com.au

Western Australia

12 Milly Court
Malaga WA 6090
Phone: +61 8 9207 0000
Fax: +61 8 9248 3725
Email: statemgrwa@clevertronics.com.au

South Australia

U2/19 Main Terrace
Richmond SA 5033
Phone: +61 8 8301 8800
Fax: +61 8 8351 8286
Email: statemgrsa@clevertronics.com.au

Auckland

Unit 22/761 Great South Road
Penrose Auckland 1061
Phone: +64 800 548 448
Email: info@clevertronics.co.nz

Christchurch

163C Wordsworth Street
Sydenham Christchurch 8023
Phone: +64 800 548 448
Email: info@clevertronics.co.nz

**clevertronics.com.au**