



CWFLED-HVG-BLK

Supalite IP65 Weatherproof Twin Spot Emergency, Surface Mount, LP,
Zoneworks HIVE, Black



PRODUCT INFORMATION

Part Number	CWFLED-HVG-BLK
MIC	AUE02920020001
Description	Supalite IP65 Weatherproof Twin Spot Emergency, Surface Mount, LP, Zoneworks HIVE, Black
Construction	Polycarbonate
Mounting	Surface wall mount (hard wired supply connection)
Dimensions	Main enclosure - 380mm (W) x 190mm (H) x 130mm (D) Total height including LED Heads 310mm.
Weight	3.6 kg
Operating Mode	Non-maintained
Testing System	Zoneworks HIVE (RF) 2.4GHz
Battery	Lithium Iron Phosphate, 6.4V 3200mAh (x2)
Charging Method	Intelligent Current Limited Constant Voltage
Lamp(s)	2 x LED Heads (adjustable), 600lm per lamp head
Operating Voltage	240V AC; 50Hz
Supply Current	0.047A
Power Factor	0.50
Power Consumption	1.2W (Standby), 5.4W (Max)
Inrush Current (Peak/Duration)	3.14A/172µs
Earth Leakage	0.100mA
IP Rating	IP65
Impact Rating	TBA
Operating Temperature	0°C to 40°C
AS2293 Classification	C ₀ =N/A C ₉₀ =N/A
Applicable Standards	AS/NZS3820, CISPR15, AS/NZS2293.3
Compliance Marking (RCM)	

REPLACEMENT PARTS

PART NUMBER	DESCRIPTION
1550290	Battery
1100551	LED Panel
AUM02970190001	Emergency Driver
8003570	Node

The product details described in this document are current as at the version date of the document. We reserve the right to change product design, specifications or materials (Specifications) as part of our continuous improvement program. Please confirm the applicable Specifications at the time of placing your order

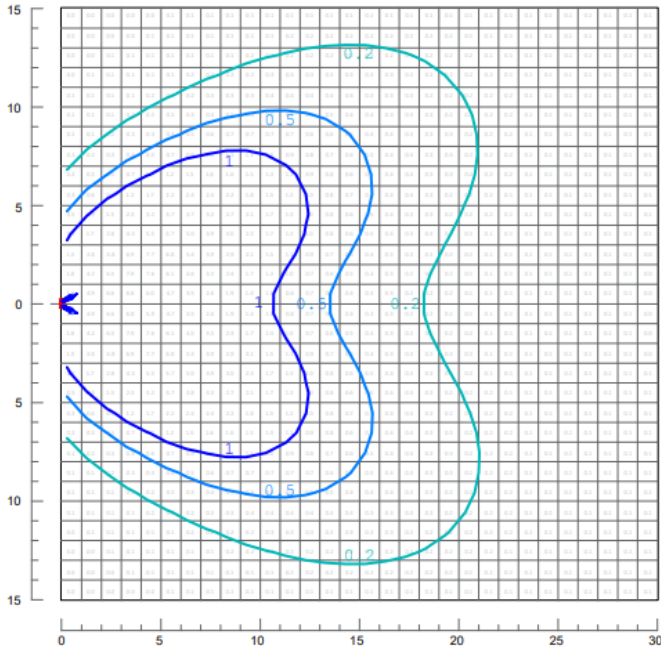


CWFLED-HVG-BLK

Supalite IP65 Weatherproof Twin Spot Emergency, Surface Mount, LP,
Zoneworks HIVE, Black

Isolux plot and value table for a 30m x 30m area serviced by a Weatherproof Supalite with each LED lamp head tilted down 30°, rolled out 30°. The Weatherproof Supalite mounted on the wall at a height of 3m and 6m (values in lux).

Mounting Height 3m



Mounting Height 6m

