



CWFLED-D2

Supalite IP65 Weatherproof Twin Spot Emergency,
Surface Mount, LP, DALI-2 Emergency



PRODUCT INFORMATION	
Part Number	CWFLED-D2
MIC	AUE02220080001
Description	Supalite IP65 Weatherproof Twin Spot Emergency, Surface Mount, LP, DALI-2 Emergency
Construction	Polycarbonate
Mounting	Surface wall mount (hard wired supply connection)
Dimensions L x W x H	Main enclosure - 380mm (W) x 190mm (H) x 130mm (D)
Ceiling Cut-Out	N/A
Weight	3.6 kg
Operating Mode	Non-maintained
Testing System	DALI-2
Battery	Lithium Iron Phosphate, 6.4V 3200mAh
Charging Method	Intelligent Current Limited Constant Voltage
Lamp(s)	2 x LED Heads (adjustable), 600lm per lamp head
Operating Voltage	240V AC; 50Hz
Supply Current	TBA
Power Factor	TBA
Power Consumption	1.2W (Standby), 5.4W (Max)
Inrush Current (Max)	5.3A, 232µs
Earth Leakage	0.110mA
IP Rating	IP65
IK Rating	N/A
Operating Temperature	0°C to 40°C
AS2293 Classification	C ₀ =N/A C ₉₀ =N/A
Applicable Standards	AS/NZS3820, CISPR15, AS/NZS2293.3
Compliance Marking (RCM)	

REPLACEMENT PARTS	
PART NUMBER	DESCRIPTION
1550290	Battery x 2
1100550	LED Panel
AUM02270800001	Driver Pack
8003062	Node

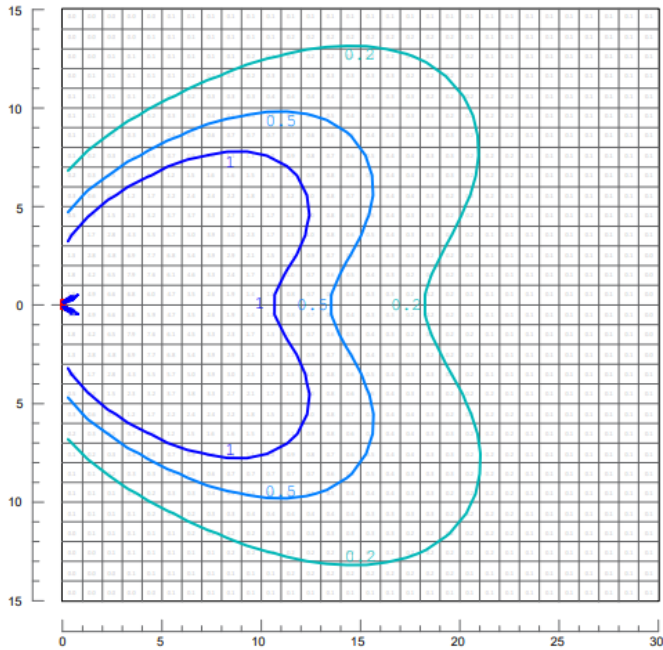


CWFLED-D2

Supalite IP65 Weatherproof Twin Spot Emergency,
Surface Mount, LP, DALI-2 Emergency

The product details described in this document are current as at the version date of the document. We reserve the right to change product design, specifications or materials (Specifications) as part of our continuous improvement program. Please confirm the applicable Specifications at the time of placing

Mounting Height 3m



Mounting Height 6m

