



## CWFLED-BLK

LP Premium LED Weatherproof Supalite Flood Unit, Surface Mount  
Emergency Light, Enabled with Clevertest plus, Black



### PRODUCT INFORMATION

Part Number	CWFLED-BLK
MIC	AUE02320040001
Description	LP Premium LED Weatherproof Supalite Flood Unit, Surface Mount Emergency Light, Enabled with Clevertest plus, Black
Construction	Polycarbonate
Mounting	Surface wall mount (hard wired supply connection)
Dimensions	Main enclosure - 380mm (W) x 190mm (H) x 130mm (D) Total height including LED Heads 310mm.
Weight	3.6 kg
Operating Mode	Non-maintained
Testing System	Clevertest Plus Enabled (Not activated by default)
Battery	Lithium Iron Phosphate, 6.4V 3200mAh
Charging Method	Intelligent Current Limited Constant Voltage
Lamp(s)	2 x LED Heads (adjustable), 600lm per lamp head
Operating Voltage	240V AC; 50Hz
Supply Current	TBC
Power Factor	TBC
Power Consumption	1.0W (Standby), 5.4W (Max)
Inrush Current (Peak/Duration)	TBC
Earth Leakage	TBC
IP Rating	IP65
Impact Rating	N/A
Operating Temperature	0°C to 40°C
AS2293 Classification	C <sub>0</sub> =N/A C <sub>90</sub> =N/A
Applicable Standards	AS/NZS3820, CISPR15, AS/NZS2293.3
Compliance Marking (RCM)	

### REPLACEMENT PARTS

PART NUMBER	DESCRIPTION
1550290	Battery
AUM02370210001	Emergency Driver
1100551	LED Panel

The product details described in this document are current as at the version date of the document. We reserve the right to change product design, specifications or materials (Specifications) as part of our continuous improvement program. Please confirm the applicable Specifications at the time of placing your order

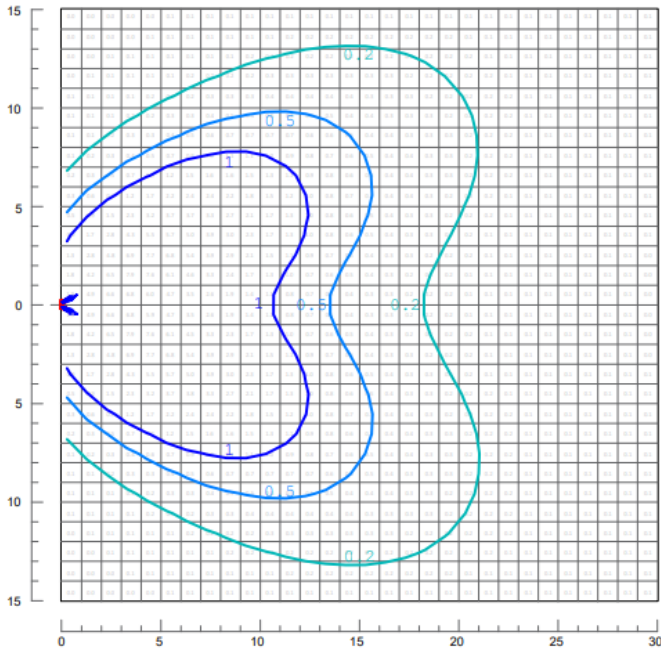


## CWFLED-BLK

LP Premium LED Weatherproof Supalite Flood Unit, Surface Mount  
Emergency Light, Enabled with Clevertest plus, Black

Isolux plot and value table for a 30m x 30m area serviced by a Weatherproof Supalite with each LED lamp head tilted down 30°, rolled out 30°. The Weatherproof Supalite mounted on the wall at a height of 3m and 6m (values in lux).

### Mounting Height 3m



### Mounting Height 6m

