

Zoneworks and DATA Monitored Options

Ultrablades with part numbers LUBPRO-SM-ZW, LUBPRO-SM-DATA are fitted with Zoneworks communications modules (nodes). These fittings are monitored using either Powerline Carrier Technology that utilises the power cable to provide data communication or a dedicated data cable to/from data routers installed on a dedicated data trunk connected to a central Server (can also be connected via Ethernet/Internet/Fibre). Zoneworks software on the server is used to monitor, coordinate testing and collate test data from each Ultrablade and can be commissioned by a single push of the test switch, or scanning of the supplied barcode. The LED Test Switch indicator provides a multifunction indication of the status of the Ultrablade during testing and normal operation:

State	LED Operation
Commissioned	LED on Solid (Green)
Un-commissioned	LED flashes at 0.5Hz (0.5s Green, 0.5s Yellow)
Emergency Light Test In Progress	LED flashes at 3s On (Yellow) & 0.5s Off

In the case of the DATA version a 2-way "figure 8" cable and terminal block facilitates the connection to the DATA network via a multi-drop bus (daisy chain connection). For further information of installation of a Zoneworks system, please refer to the Zoneworks Users Guide and Commissioning Guide (incl. DATA version)

DALI EM Option

Ultrablades with part numbers LUBPRO-SM-DALI are fitted with DALI modules (nodes) that facilitate connection and integration to 3rd Party Lighting Control Systems. Before installing the LUBPRO-SM-DALI please confirm that the Lighting Control System has the capability to monitor DALI Emergency Luminaires. The LUBPRO-SM-DALI will be addressed and configured into the control system by the Lighting Control System Commissioning Technicians and not Clevertronics.

State	LED Operation
Commissioned/ Un-commissioned	LED on Solid (Green)
Emergency Light Test in progress	LED flashes at 1s On (Yellow) & 1s Off
"IDENTIFY COMMAND"	Fitting goes into emergency mode for 10 seconds

A 2-way "figure 8" cable and terminal block facilitates the connection to the DALI network. DALI connections are marked as Da Da.

Clevertest and Clevertest Plus

Refer to the supplementary operation guide supplied with the Product.

After Power ON, the Status LED on a Clevertest Plus enabled fitting will display a rapid Green or Red flashing for a period up to 2 minutes.

Caution:


On many building sites, power circuits may be cut off in an uncontrolled and repetitive basis during construction. As a result, any Ultrablade Units, on these circuits, will have their batteries discharged or "cycled". The Li-ion battery in the Ultrablade has been selected to give excellent long-life performance in a controlled IEC 60598-2-22 testing environment. Excessive battery cycling will reduce through-life performance and may lead to premature battery failure. Battery warranty claims as a result of such abuse, are specifically EXCLUDED from Clevertronics warranty terms.



L10™ Ultrablade Pro Surface Mount LED Exit

Installation & Maintenance Instruction Leaflet



NOTE: Standard product codes with this symbol  are enabled with Clevertest Plus capability. Please refer to the operation guide supplied with the product for details.

Australia (Head Office)
195 Chesterville Rd
Moorabbin VIC 3189
Phone: +61 3 9559 2700
E-Mail: support@clevertronics.com.au




UK OFFICE
362 Stockley cl
West Drayton UB7 9BL

Models: LUBPRO-SM-xx

Testing Options:

Manual Test xx = Blank
Zoneworks xx = ZW
Z/W DATA xx = DATA
DALI Comp. xx = DALI
Clevertest xx = CT

(NOTE: -CT Products supplied with the Clevertest Plus Symbol  are activated with Clevertest PLUS capability. Please refer to the operation guide supplied with the product for details).

Spare Parts:

1530030
8002178
8002948

BATT: L10 3.3V 2500mAh 260mm lead, no BRKT.
LED strip PCB Assy (CT10602-D3)
LED Driver PCA: C/LUBPRO-SM #CT10142-L8 6C60

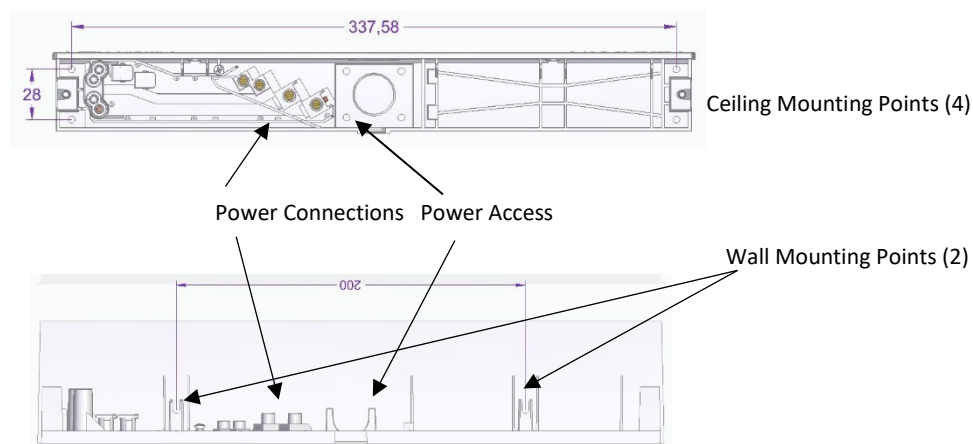
Important:

It is illegal for anyone, except for a licensed electrician to install or maintain this product. Before installation, ensure that the electricity supply has been switched off and isolated. Installation must be carried out in accordance with the relevant British Standards.

Installation:

The L10 Ultrablade Pro Surface Mount LED Exit (LUBPRO-SM) is a surface mount fitting. The LUBPRO-SM can be attached directly to any solid surface. Please follow the steps below to install the LUBPRO-SM Exit:

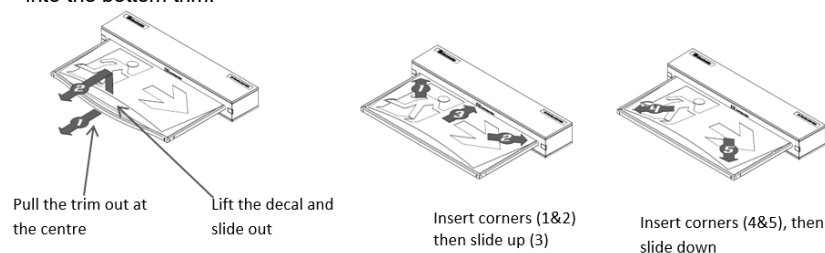
- Open the fitting using the 2 screws on either side of the blade.
- Locate the mounting surface.
- Drill holes in the mounting base to suit the mounting method, Ceiling or Wall (see images below).
- Use the mounting bracket to mark-out the mounting holes for Ceiling or Wall Mount.
- Drill power access hole as required.
- Mount the fitting using appropriate fixings.
- Route the power to the mains connection and connect the 240VAC supply.
- Attach the blade assembly to the bracket and tighten the 2 mounting screws.
- Apply power to the fitting and test.
- This luminaire contains non-user replaceable light source and battery.
- If the CTP capabilities are activated, please affix the CTP Status Label to a visible surface.



Changing EXIT Legend Inserts:

The Ultrablade Pro Exit comes with an assortment of standard legends.

1. To remove the legend, grasp the centre of the bottom trim piece and pull down slightly to expose the legend edge. See photo.
2. Grasp the bottom edge of the legend and slide the existing legend out of the blade, while working the edges out along the sides.
3. Slide the new legend into the blade, ensuring to fit the edges into the sides then slide the legend to the top of the blade. Insert one bottom corner then the other. Slide the legend down into the bottom trim.



Testing Procedure:

When the unit is connected to the un-switched active, it must be allowed to charge the battery for at least 24 hours. Conduct the following tests:

- The emergency lamp must illuminate for at least 180 min after disconnection from the mains. If the unit fails to illuminate for the requisite time, remedial action must be taken to repair the situation and once completed, the unit must pass a subsequent test.
- Press and hold Test Button or switch Off Mains Supply, check that the emergency lamp is On.
- Release the Test Button or Switch ON Mains Supply, check that the emergency lamp is Off (Non-maintained operation).

Ultrablade Maintenance:

LED Lamp Replacement:

- Use only the LED Strip recommended in the Spares Parts list of this instruction.
- Disconnect battery from LED driver.
- Remove the screw holding the driver PCA. Remove the PCA.
- Remove the 4 screws holding the battery bracket. Remove the bracket with the battery.
- Disconnect the signal cable from LED strip.
- Remove 4 self-tapping screws and unclip the LED strip.
- Install the new LED strip following the above procedure in reverse.

Battery Replacement:

- Use only the battery recommended in the Spares List on this instruction.
- Remove the battery from battery compartment, un-plug the lead from the battery connector remove the old battery.
- Plug the new battery into the battery connector.
- Secure the battery into the battery compartment

Trouble Shooting:

Below are a list of common problems and their possible causes.

Fault: The Green LED Test Switch indicator is not illuminated.

Check: A.C. is connected and is turned on.
Battery is connected
Test Switch for damage.

Fault: Lamp does not illuminate in emergency mode.

Check: A.C. is connected.
Lamp is correctly inserted.
Battery is connected

Fault: Lamp illuminates in emergency mode, but only stays on for a short period.

Check: Battery has been allowed to charge for at least 24 hours.
Battery for damage.

Warranty:

For Product Warranty information and Terms and Conditions of Sales please refer to our website <https://clevertronics.com.au/warranty-statement/>