

Zoneworks and DATA Monitored Options

Ultrablades with part numbers LUBPRO-ZW, LUBPRO-DATA are fitted with Zoneworks communications modules (nodes). These fittings are monitored using either Powerline Carrier Technology that utilises the power cable to provide data communication or a dedicated data cable to/from data routers installed on a dedicated data trunk connected to a central Server (can also be connected via Ethernet/Internet/Fibre). Zoneworks software on the server is used to monitor, coordinate testing and collate test data from each Ultrablade and can be commissioned by a single push of the test switch, or scanning of the supplied barcode. The LED Test Switch indicator provides a multifunction indication of the status of the Ultrablade during testing and normal operation:

State	LED Operation
Commissioned	LED on Solid (Green)
Un-commissioned	LED flashes at 0.5Hz (0.5s Green, 0.5s Yellow)
Emergency Light Test In Progress	LED flashes at 3s On (Yellow) & 0.5s Off

In the case of the DATA version a 2-way "figure 8" cable and terminal block facilitates the connection to the DATA network via a multi-drop bus (daisy chain connection). For further information of installation of a Zoneworks XT system, please refer to the Zoneworks Users Guide and Commissioning Guide (incl. DATA version)

DALI EM Option

Ultrablades with part numbers LUBPRO-DALI are fitted with DALI modules (nodes) that facilitate connection and integration to 3rd Party Lighting Control Systems. Before installing the LUBPRO-DALI please confirm that the Lighting Control System has the capability to monitor DALI Emergency Luminaires. The LUBPRO-DALI will be addressed and configured into the control system by the Lighting Control System Commissioning Technicians and not Clevertronics.

State	LED Operation
Commissioned/ Un-commissioned	LED on Solid (Green)
Emergency Light Test in progress	LED flashes at 1s On (Yellow) & 1s Off
"IDENTIFY COMMAND"	Fitting goes into emergency mode for 10 seconds

A 2-way "figure 8" cable and terminal block facilitates the connection to the DALI network. DALI connections are marked as Da Da.

Clevertest and Clevertest Plus

Refer to the supplementary operation guide supplied with the Product.

After Power ON, the Status LED on a Clevertest Plus enabled fitting will display a rapid Green or Red flashing for a period up to 2 minutes.

Caution:


On many building sites, power circuits may be cut off in an uncontrolled and repetitive basis during construction. As a result, any Ultrablade Units, on these circuits, will have their batteries discharged or "cycled". The Li-ion battery in the Ultrablade has been selected to give excellent long life performance in a controlled IEC 60598-2-22 testing environment. Excessive battery cycling will reduce through-life performance and may lead to premature battery failure. Battery warranty claims, as a result of such abuse, are specifically EXCLUDED from Clevertronics warranty terms.



L10™ Ultrablade Pro Recessed LED Exit

Installation & Maintenance Instruction Leaflet



NOTE: Standard product codes with this symbol  are enabled with Clevertest Plus capability. Please refer to the operation guide supplied with the product for details.

Australia (Head Office)
195 Chesterville Rd
Moorabbin VIC 3189
Phone: +61 3 9559 2700
E-Mail: support@clevertronics.com.au




UK OFFICE
362 Stockley cl
West Drayton UB7 9BL

Models: LUBPRO-xx

Testing Options:

Manual Test xx = Blank
Zoneworks xx = ZW
Z/W DATA xx = DATA
DALI Comp. xx = DALI
Clevertest xx = CT

(NOTE: -CT Products supplied with the Clevertest Plus Symbol  are activated with Clevertest PLUS capability. Please refer to the operation guide supplied with the product for details).

Spare Parts:

1530050
8002178
UKM01370030001

BATT: L10 3.3V 2500mAh 70mm lead, no BRKT.
PCA: UBP LED strip PCB Assy (CT10602-D3)
LUBPRO-CKIT-70, Ultrablade Pro, Control Only, L10

Important:

It is illegal for anyone, except for a licensed electrician to install or maintain this product. Before installation, ensure that the electricity supply has been switched off and isolated. Installation must be carried out in accordance with the relevant British Standards.

Installation:

The L10 Ultrablade Pro LED Exit (LUBPRO) is a recessed ceiling mount fitting. The LUBPRO can be attached directly to any solid surface, or to a ceiling tile with the integrated clamping mechanisms. The LUBPRO comes with an attached Flex. Please follow the steps below to install the LUBPRO Exit:

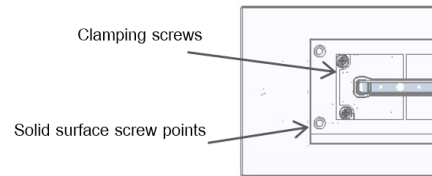
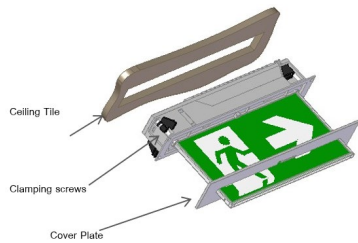
- Create a cut-out (350mm x 48mm) in the mounting surface.
- Route the power cord to the mains connection and connect the 240VAC supply.
- Insert the LUBPRO into the ceiling cavity tighten the (4) clamping screws.
- Alternately, fix the LUBPRO to a solid surface using (4) screws through the surface material.
- Install the cover plate.
- Apply power to the fitting and test.
- If the external flexible cable or cord of this luminaire is damaged, it shall be exclusively replaced by the manufacturer or his service agent or a similar qualified person to avoid a hazard.
- This luminaire contains non-user replaceable light source and battery.
- Terminal block not included. Installation may require advice from a qualified person.
- Recommended specifications of terminal block for connecting leads:
 - Type of Terminal: Screw Terminal
 - Number of Terminals: 2-Pin
 - Rated Voltage: 250 V
 - Rated Connecting Capacity: 10A
- If the CTP capabilities are activated, please affix the CTP Status Label to a visible surface.

Networking:

When installing the product on a monitored network, (ZONENETWORKS, DATA, DALI) simply insert the relevant Smart Node PCA.

Dimensions:

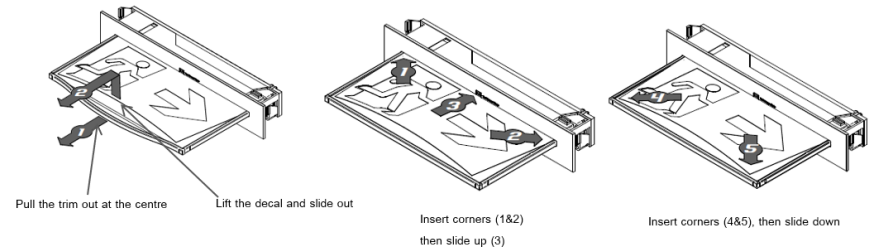
Luminaire Dimensions:	380mm x 220mm
Cover Plate:	385mm x 67mm
Ceiling Cut-out:	350mm x 48mm
Minimum Depth	80mm



Changing EXIT Legend Inserts:

The Ultrablade Pro Exit comes with an assortment of standard legends.

1. To remove the legend, grasp the centre of the bottom trim piece and pull down slightly to expose the legend edge. See photo.
2. Grasp the bottom edge of the legend and slide the existing legend out of the blade, while working the edges out along the sides.
3. Slide the new legend into the blade, ensuring to fit the edges into the sides then slide the legend to the top of the blade. Insert one bottom corner then the other. Slide the legend down into the bottom trim.



Testing Procedure:

When the unit is connected to the un-switched active, it must be allowed to charge the battery for at least 24 hours. Conduct the following tests:

- The emergency lamp must illuminate for at least 180 min after disconnection from the mains. The results of all tests are required to be recorded in a service logbook, which is to be kept on-site at all times. If the unit fails to illuminate for the requisite time, remedial action must be taken to repair the situation and once completed, the unit must pass a subsequent test.
- Press and hold Test Button or switch Off Mains Supply, check that the emergency lamp is On.
- Release the Test Button or Switch On Mains Supply, check that the emergency lamp is Off (Non-maintained operation).

Ultrablade Maintenance:

LED Lamp Replacement:

- Use only the LED Strip recommended in the Spares Parts list of this instruction.
- Disconnect battery from LED driver pack and cut cable tie to remove.
- Disconnect the signal cable from LED strip, loosen screw and remove the mains driver pack.
- Remove 4 self-tapping screws and unclip the LED strip.
- Install the new LED strip following the above procedure in reverse.

Battery Replacement:

- Use only the battery recommended in the Spares List on this instruction.
- Remove the cable ties holding the battery, un-plug the lead from the battery connector remove the old battery.
- Plug the new battery into the battery connector.
- Secure the battery using suitable cable ties

Trouble Shooting:

Below are a list of common problems and their possible causes.

Fault: The Green LED Test Switch indicator is not illuminated.

Check: A.C. is connected and is turned on.
Battery is connected
Test Switch for damage.

Fault: Lamp does not illuminate in emergency mode.

Check: A.C. is connected.
Lamp is correctly inserted.
Battery is connected

Fault: Lamp illuminates in emergency mode, but only stays on for a short period.

Check: Battery has been allowed to charge for at least 24 hours.
Battery for damage.

Warranty:

For Product Warranty information and Terms and Conditions of Sales please refer to our website <https://clevertronics.com.au/warranty-statement/>