

## Testing:

Once connected to the 240V mains supply, the unit must be allowed to charge the battery for at least 24 hours. Conduct the following tests:

- For the first test, the emergency lamp must remain illuminated for at least 2 hours after disconnection from the mains supply.
- Subsequent tests require the unit to illuminate for at least 90 minutes. The results of all tests are required to be recorded in a service logbook, which is to be kept on-site at all times. If the unit fails to remain illuminated for the requisite time, remedial action must be taken to repair the situation and once completed, the unit must pass a subsequent test. For more specific information, please refer to the current edition of the AS 2293.3 Standard.

## Zoneworks, HIVE and DATA Monitored Options

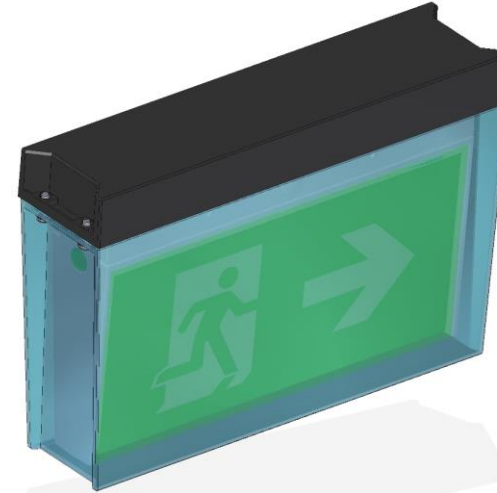
Fittings with part numbers -ZW, -HV, -DATA are fitted with Zoneworks communications modules (nodes). These fittings are monitored using either Powerline Carrier Technology that utilize the power cable to provide data communication, RF transceiver modules operating in the ISM band or a dedicated data cable to/from data routers installed on a dedicated data trunk connected to a central Server (can also be connected via Ethernet/Internet/Fibre). Zoneworks software on the server is used to monitor, coordinate testing and collate test data from each fitting. Zoneworks Fittings can be commissioned by a single push of the test switch or by scanning the supplied barcode. The LED Test Switch indicator provides a multifunction indication of the status of the fitting during testing and normal operation:

Option	State	LED Operation
ZW, HV, DATA	Commissioned	LED on Solid (Green)
ZW, DATA	Un-commissioned	<b>Batt plugged-in:</b> yellow 1s, green 1s
		<b>Batt unplugged:</b> red 1s, off 1s
HV	Un-commissioned With network connectivity	<b>Batt plugged-in:</b> yellow 1s, green 1s
		<b>Batt unplugged:</b> red 1s, off 1s
HV	Un-commissioned Without network connectivity	<b>Batt plugged-in:</b> yellow 250mS, green 250mS, yellow 250mS, green 250mS, green 1s
		<b>Batt unplugged:</b> red 250mS, off 250mS, red 250mS, off 250mS, off 1s
ZW, DATA	Emergency Light Test In Progress	LED flashes at yellow 5s , Off 1s
HV	Emergency Light Test In Progress	LED flashes at yellow 1s , Off 1s

In the case of the DATA version a 2-way "figure 8" cable and terminal block facilitates the connection to the DATA network via a multi-drop bus (daisy chain connection). For further information of installation of a Zoneworks system, please refer to the Zoneworks Users Guide and Commissioning Guide (incl. DATA version)



# L10™ Freezer Cleverfit Pro LED Exit Installation & Maintenance Instruction Leaflet



Designed in Australia to comply with the requirements of AS2293.3: 2005 and AS/NZS CISPR15: 2017

## Models: LWEPRO-xx-FZR

### Testing:

Manual Test	xx = Blank
Zoneworks	xx = ZW
Z/W DATA	xx = DATA
Zoneworks HIVE	xx = HV

## Spare Parts:

1530030	BATTERY:L10 3.3V 2.5AH 260mm lead, no Brkt
8002959	PCA:CCF-Pro #CT10142-L9 250mA Batt
8002710	PCA:DurisLED Strip Clvrft Pro CT10276-D3

## Important:

It is illegal for anyone, except for a licensed electrician to install or maintain this product. Before installation, ensure that the electricity supply has been switched off and isolated. Installation must be carried out in accordance with the relevant Australian and International Standards.

### Victoria (Head Office & Manufacturing)

Website: [www.clevertronics.com.au](http://www.clevertronics.com.au)

Email: [info@clevertronics.com.au](mailto:info@clevertronics.com.au)

Phone: +61 3 9559 2700

Fax: +61 3 9559 2799

### New South Wales

Phone: +61 2 8805 6400

Fax: +61 2 8805 6444

### Queensland

Phone: +61 7 3442 9700

Fax: +61 7 3442 9777

### South Australia/Northern Territory

Phone: +61 8 8301 8800

Fax: +61 8 8351 8286

### Western Australia

Phone: +61 8 9207 0000

Fax: +61 8 9207 0088

### New Zealand

Phone: +64 800 548 448

## Installation:

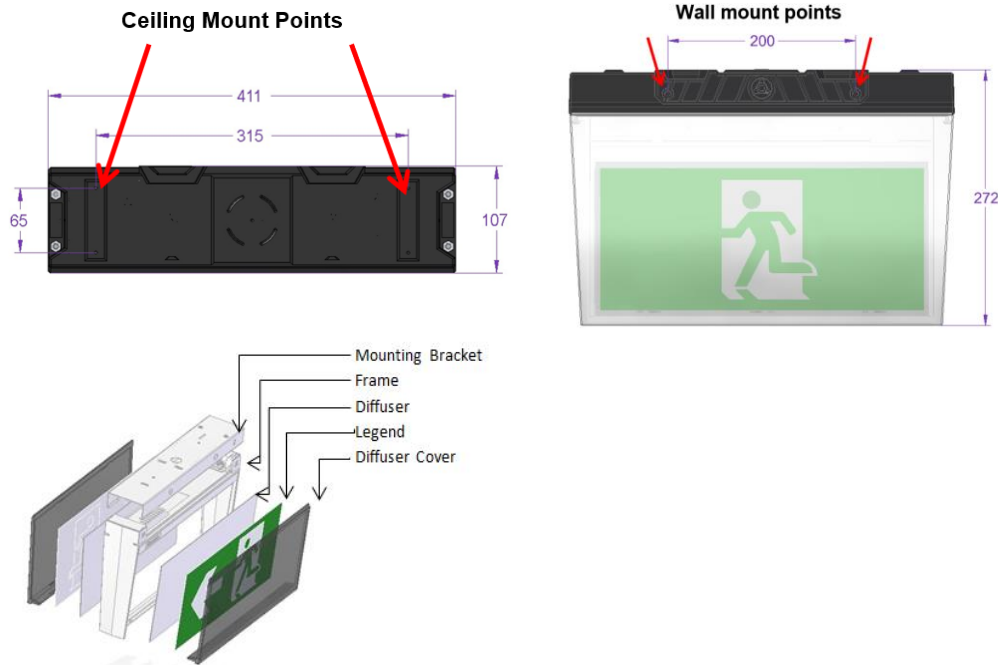
The weatherproof freezer Exit can be installed either Ceiling or Wall Mounted. The Cleverfit PRO Exit sign within the clear weatherproof enclosure uses a "slide connect bracket base" that is mounted inside the weatherproof enclosure and wired into position first. The main body can be installed once the base is wired or later to avoid damage during the construction phase. Please follow the steps below to install the weatherproof freezer Exit;

- Remove the clear cover from the Weatherproof Exit enclosure.
- Remove the Exit sign packaged with the Weatherproof enclosure and place it aside
- Determine if the enclosure is to be ceiling or wall mounted
- WALL MOUNT – refer to the image and instruction on the adjoining page (be sure to drill a 20mm hole for the cable entry)
- CEILING MOUNT
  - Drill a 20mm hole in the top of the bracket for the cable entry
  - Position the base in the mounting position.
  - Using the base as a guide, mark the holes for mounting and one for mains access. Then install the base using appropriate fixings (not supplied).
- After installation the base (wall or ceiling mount) disengage the exit body from the slide bracket.
- Position the Exit sign slide bracket onto the base of the Weatherproof Enclosure and fix the base of the EXIT sign to the base of the Weatherproof Enclosure using the screws provided. Refer to accompanying Exit Sign instruction sheet for more detail.
- Route and connect the 240VAC supply to the terminal block in the exit bracket.
- Engage the body into the slide connect bracket
- Apply mains power and check that the Exit Sign is operational.

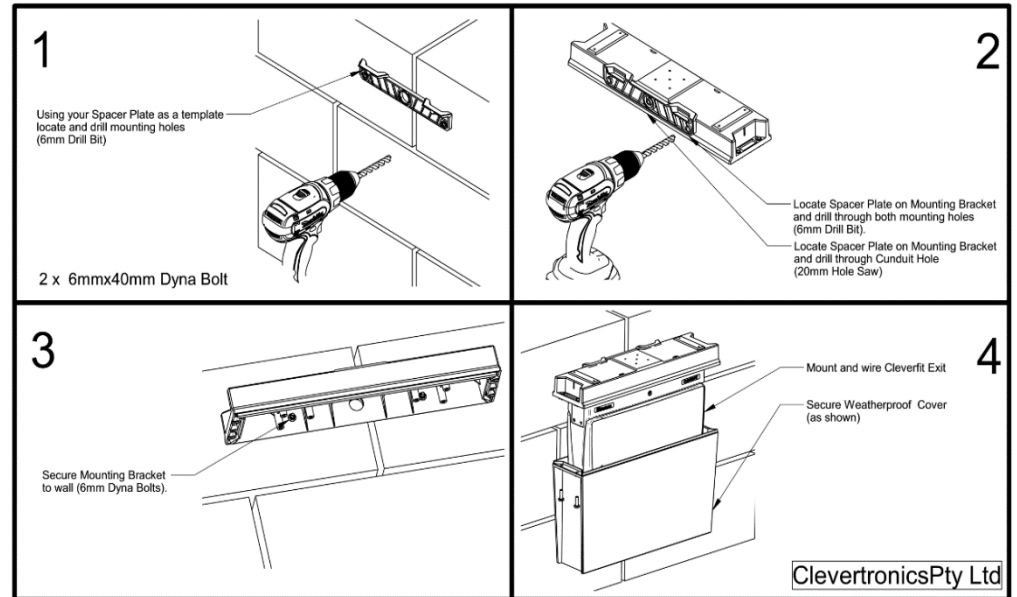
## Networking:

When installing the product on a monitored network, (ZONWORKS, DATA,HV) simply insert the relevant Smart Node PCA.

## Dimensions:



## Wall Mount installation instructions



**Rated Emergency Lumen Output in accordance with AS2293.1 (refer to spacing tables for installation positions):**

Refer to tech label on the product.

## Trouble Shooting:

Below are a list of common problems and their possible causes.

**Fault: The Green LED Test Switch indicator is not illuminated.**

**Check:** A.C. is connected and is turned on.  
Battery is connected  
Test Switch for damage.

**Fault: Lamp does not illuminate in emergency mode.**

**Check:** A.C. is connected.  
Lamp is correctly inserted.  
Battery is connected

**Fault: Lamp illuminates in emergency mode, but only stays on for a short period.**

**Check:** Battery has been allowed to charge for at least 24 hours.  
Battery for damage.

## Caution:

On many building sites, power circuits may be cut off in an uncontrolled and repetitive basis during construction. As a result, any Exit & Emergency Units, on these circuits, will have their batteries discharged or "cycled". The battery in this fitting has been selected to give excellent long-life performance in a controlled AS2293 testing environment. Excessive battery cycling will reduce through-life performance and may lead to premature battery failure. Battery warranty claims, as a result of such abuse, are specifically EXCLUDED from Clevertronics warranty terms.

## Warranty:

For Product Warranty information and Terms and Conditions of Sales please refer to our website

<http://clevertronics.com.au/terms-conditions-sale-australia-nz/>